

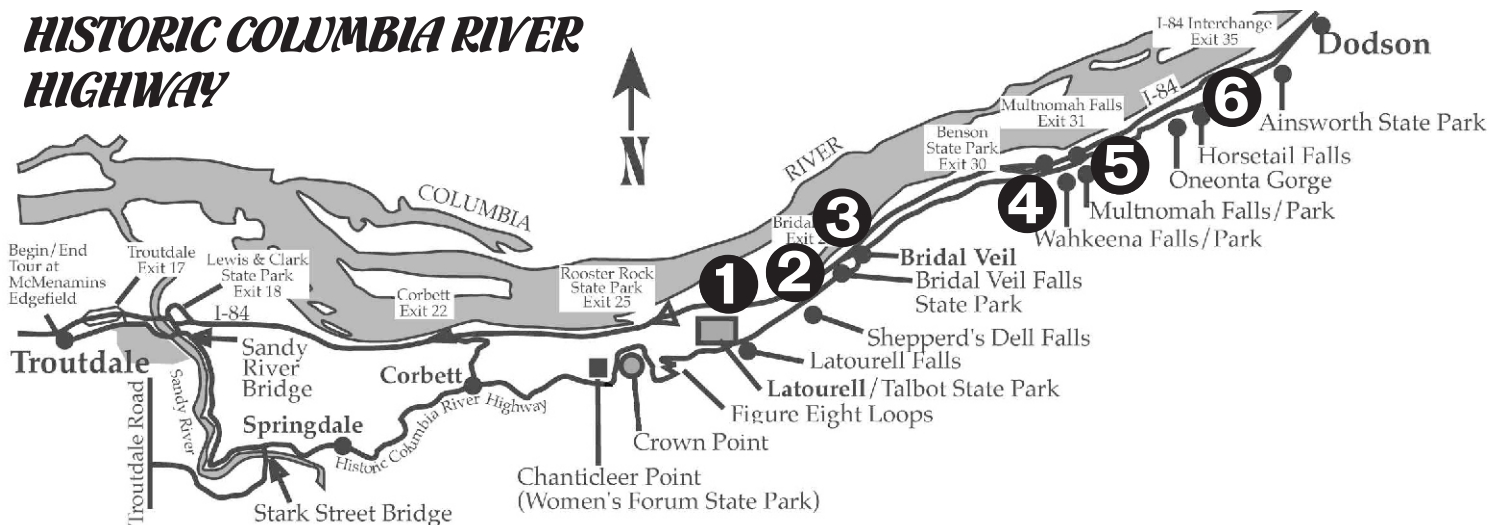
Provided free as a public service by  
Friends of Vista House

FOVH, P. O. Box 204, Corbett, OR 97019.  
Telephone: (503) 695-2230  
friends@vistahouse.com



*Become a Member!*

## SHORT TRAILS ALONG THE HISTORIC COLUMBIA RIVER HIGHWAY



TRAIL HEAD	LENGTH	DIFFICULTY	FEATURES	DISTANCE FROM VISTA HOUSE
1 Latourell Falls and Guy Talbot Park	1 mile (one way)	Easy	A lovely plunge falls, upper falls, picnicking	2.5 miles
2 Shepperd's Dell Falls State Park	Short path below bridge	Rough pathway	Tiered falls, a place of meditation	3.5 miles
3 Bridal Veil Falls State Park	.3 mile (one way)	Hilly terrain	Tiered falls, picnicking, restrooms	4.5 miles
3 Bridal Veil Overlook Loop (wheelchair access)	.5 mile total	Easy	Features an excellent view of Columbia River	4.5 miles
4 Wahkeena Falls Park Trail	.5 mile (one way)	Fairly easy	Tiered falls, big picnic area, good view of gorge	8 miles
4 Wahkeena Falls to Fairy Falls	1.4 miles (one way)	Hilly terrain	Fan falls, small delightful, unique	8 miles
5 Multnomah Falls, Lodge to Bridge	.25 miles (one way)	Moderate	Tiered, cool encounter with upper and lower falls	8.5 miles
5 Multnomah Falls to top of falls	1 mile (one way)	Hilly terrain	Stunning view looking down on falls, lodge and river	8.5 miles
6 Horsetail Falls to Ponytail Falls	.5 miles (one way)	Hilly terrain	Horsetail shape. You can walk behind the falls	11 miles
6 Horsetail Falls to Oneonta Falls Bridge	2 mi (one way) 3 mi total loop	Easy past Ponytail	Beautiful view junction follows, take lower trail to highway	11 miles
6 Horsetail Falls cont on to Triple Falls	4.25 miles (loop + extension)	Hilly terrain	Segmented, 1 mile above Oneonta Bridge junction. Worth it!	11 miles



Provided in cooperation with Oregon Parks and Recreation Department

Some waterfall shapes: Plunge, Tiered, Fan, Horsetail, Segmented

# Hiking Loops

## near Multnomah Falls



Columbia River Gorge  
National Scenic Area

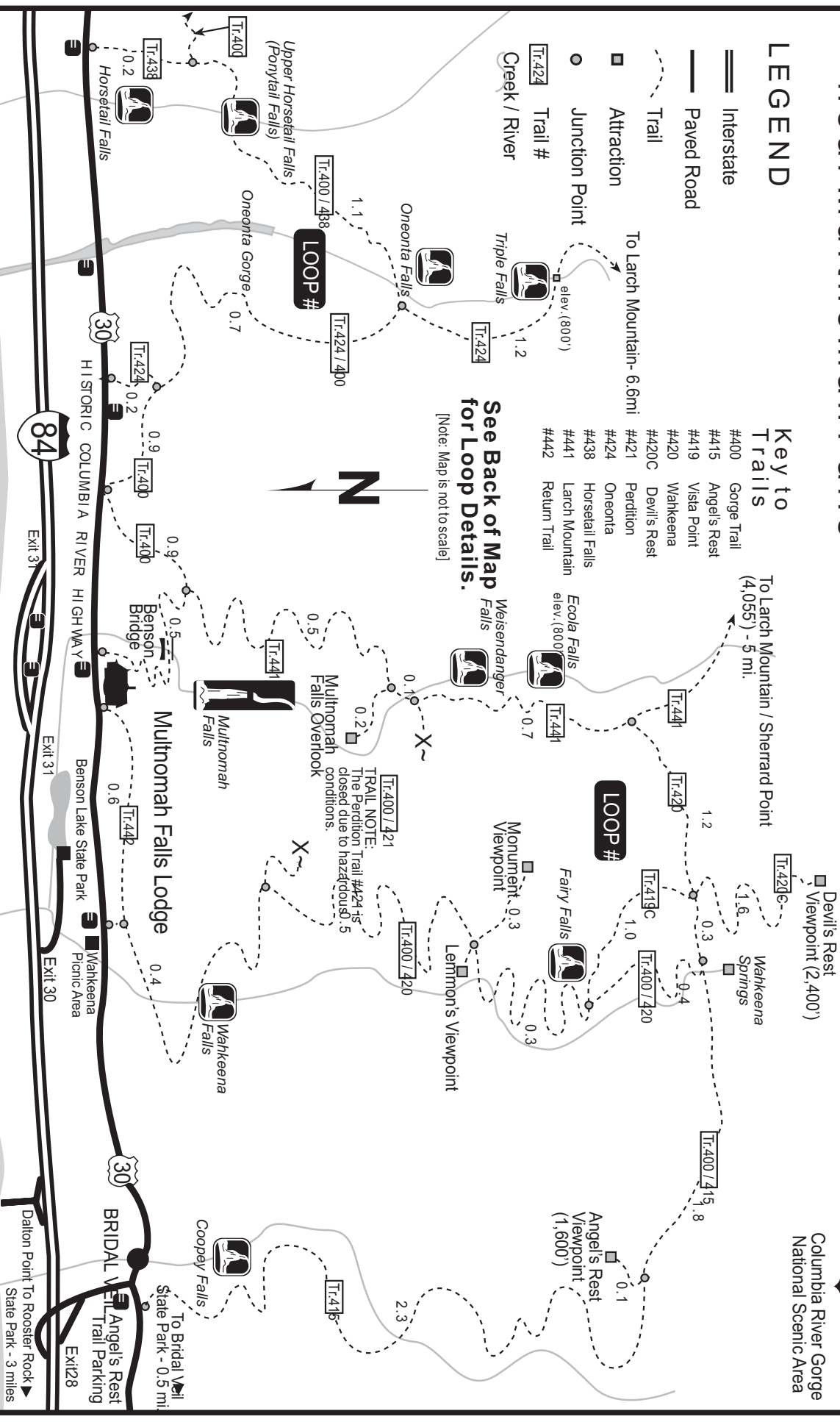
### LEGEND

- Interstate
- Paved Road
- Trail
- Attraction
- Junction Point
- Trail #
- Creek / River

#### Key to Trails

#400	Gorge Trail
#415	Angel's Rest
#419	Vista Point
#420	Wankeena
#420C	Devil's Rest
#421	Perdition
#424	Oneonta
#438	Horsetail Falls
#441	Larch Mountain
#442	Return Trail

To Larch Mountain / Sherrard Point  
(4,055') - 5 mi.



See Back of Map  
for Loop Details.

[Note: Map is not to scale]



**TRAIL NOTE:**  
The Perdition Trail #421 is closed due to hazardous conditions.

Columbia River