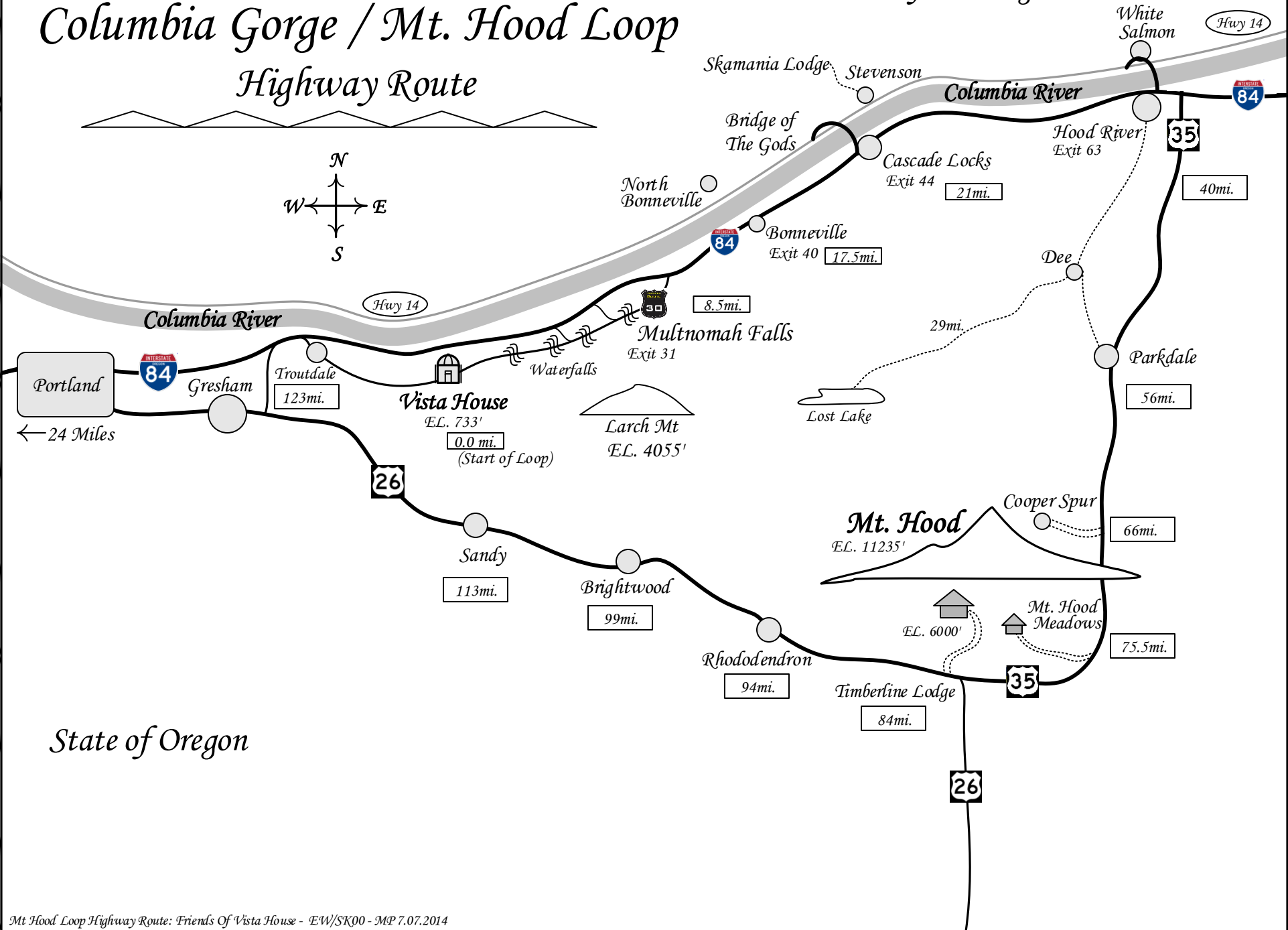
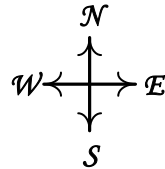


Columbia Gorge / Mt. Hood Loop Highway Route

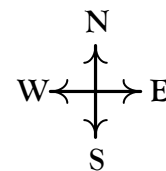
State of Washington

State of Oregon

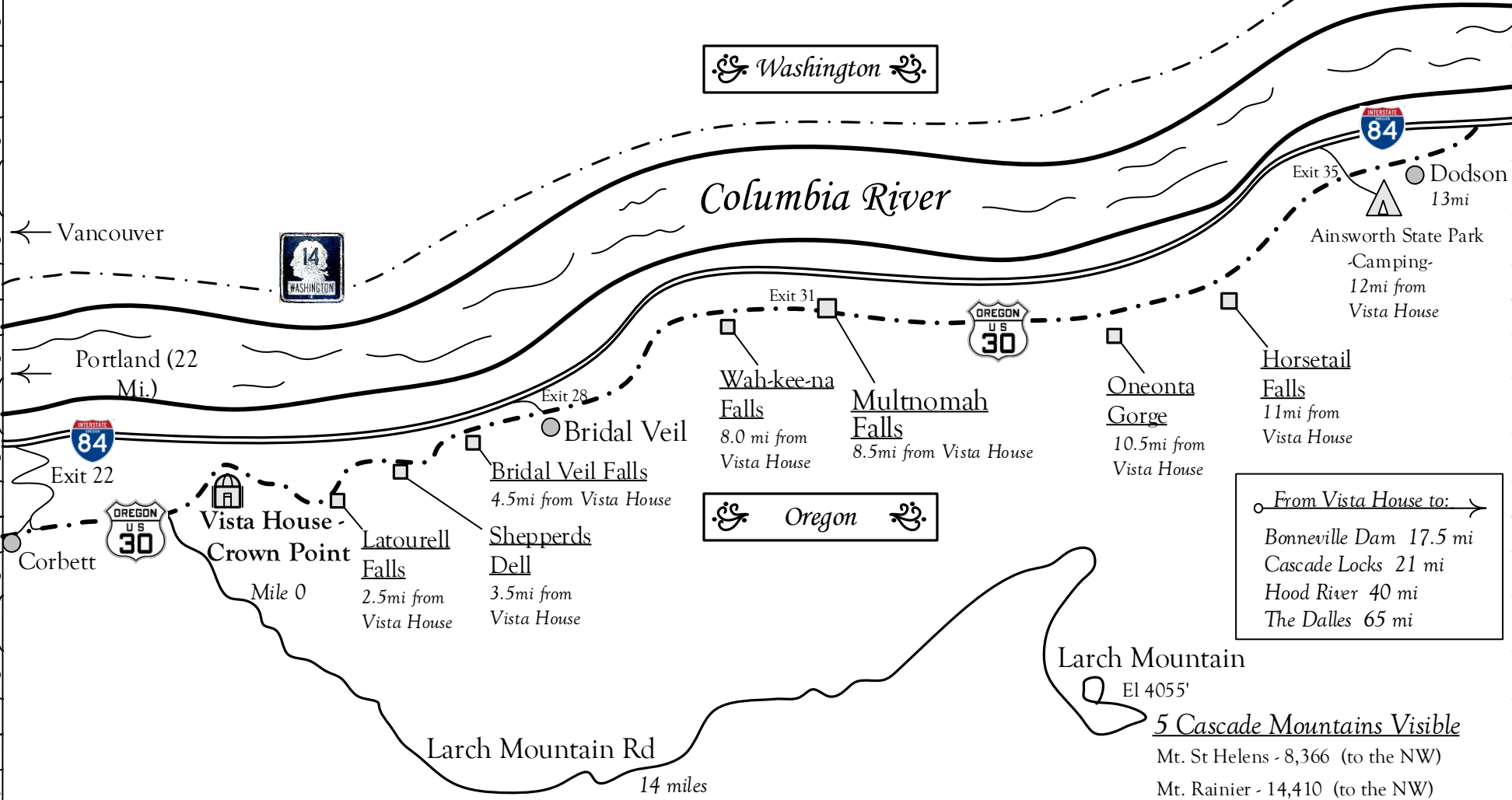


Historic Columbia River Highway

& Scenic Waterfalls



Washington



From Vista House to: →

- Bonneville Dam 17.5 mi
- Cascade Locks 21 mi
- Hood River 40 mi
- The Dalles 65 mi

Larch Mountain
El 4055'

5 Cascade Mountains Visible

- Mt. St Helens - 8,366 (to the NW)
- Mt. Rainier - 14,410 (to the NW)
- Mt. Adams - 12,307 (to the NE)
- Mt. Hood - 11,235 (to the SE)
- Mt. Jefferson - 10,497 (to the SE)